

Location, location, LOCATION

Richard Munneke

Commercial and Property Manager, NCC



NAPIER
CITY COUNCIL
Te Kaunihera o Ahuriri

You asked ...

Is it possible to create a new build at the current location?

Have you done a cost comparison between building new VS updating/expanding Onekawa pools?

What locations are available and what are their strengths / weaknesses?

Is refurbishment of the current aquatic centre in scope?

If the current NAC facility is demolished, does the Onekawa site need to stay as green space or can it be sold for development?

If the aquatic facility location changes, what will the Onekawa site be used for?

What are the future plans for the netball courts at Onekawa?

Will the current facility still be available for use during construction?



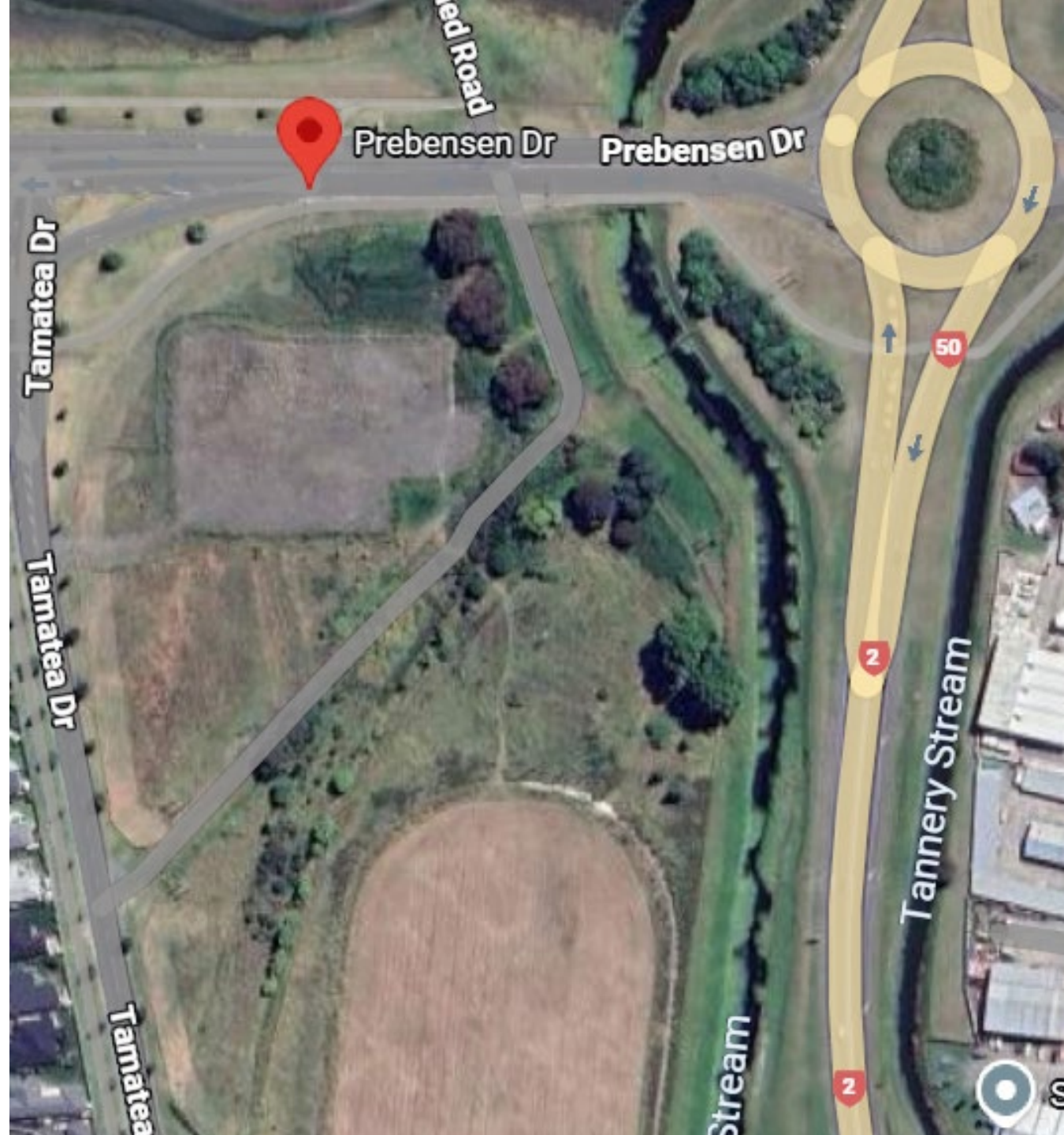
History/Context of a new aquatic centre for Napier

- Maintenance issues with existing facility
- Problems with the old landfill underneath
- Ambition to build a facility for sports and recreation (the regional sports park aquatic facility had not been built)
- Find a new site with good foundations so that pool use could continue while building.



Prebensen Drive

- Selected initially as it was surplus land, high profile location with good access
- An "off the shelf" pool complex from Christchurch was adopted
- The site and plans while approved by Council, support was very split at the Council table
- Parts of the community were vocally opposing the new site supported by a divided Council
- More technical reports were commissioned on both sites.
- The Aquatic Centre became an election issue
- Work ceased at Prebensen and Council agreed to patch up the Onekawa complex (hold for 10 years)

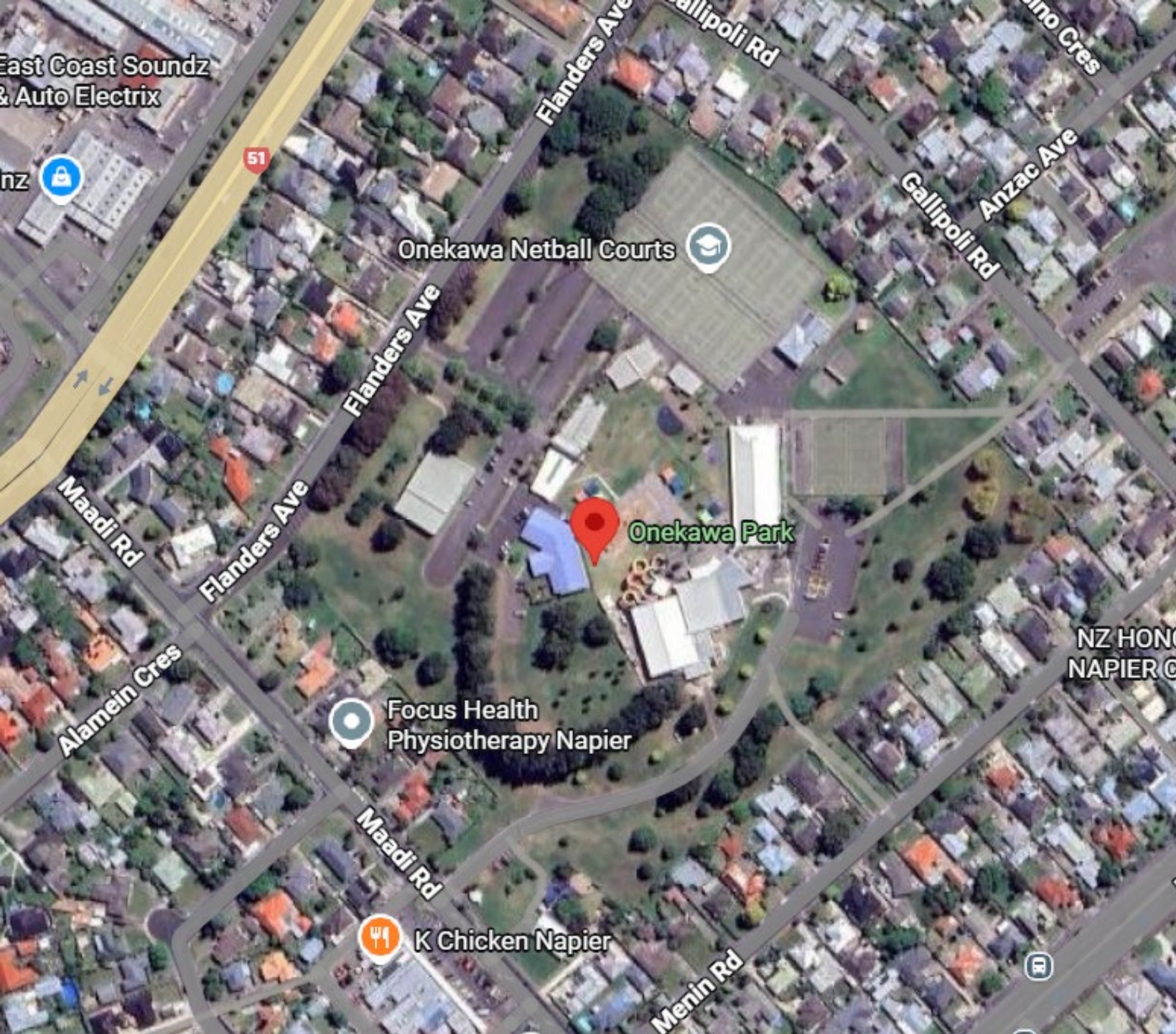


Our problem has changed, so our solution needs to change.

Regional Swimming facility for competitive swimming is now in existence

Focus mainly on recreation with 25m swim lane offering?

What would be the criteria for moving from Onekawa?



ONEKAWA PARK

Current home to Napier Aquatic Centre

Possible Netball Land available to build new while continuing to use current aquatic facilities



NAPIER
CITY COUNCIL
Te Kaunihera o Ahuriri

What would compel a move from Onekawa?

- Cost?
- Maintain swimming offering in current facility during new build?
- Fits better with scope/“what we need now”?
- Higher profile site/proximity to other attractions?
- Connectivity/access?
- Other?

What would make another site better?

- *How do we define “better” in this context?*
- *What would justify moving to another site?*

17 other sites owned by NCC

Prebensen Drive/Tamatea Drive

Park Island Southern Hub

Tamatea Park

Mareanui Park

Behind Rodney Green Arena, Taradale

Whitmore Reserve

Taradale Park

Ocean Spa expansion

Spriggs Park

Ahuriri Park

Tareha Reserve

Meeanee

Marewa Park

Pirimai Park

Anderson Park

Aquarium site

Speedway Park



Next steps

- *Thorough due diligence has been done on Prebensen Drive and current sites*
- *Are there compelling reasons to investigate another site?*
- *Which should we investigate?*
- *Which sites should we take off the table now?*



PREBENSON DRIVE/TAMATEA DRIVE

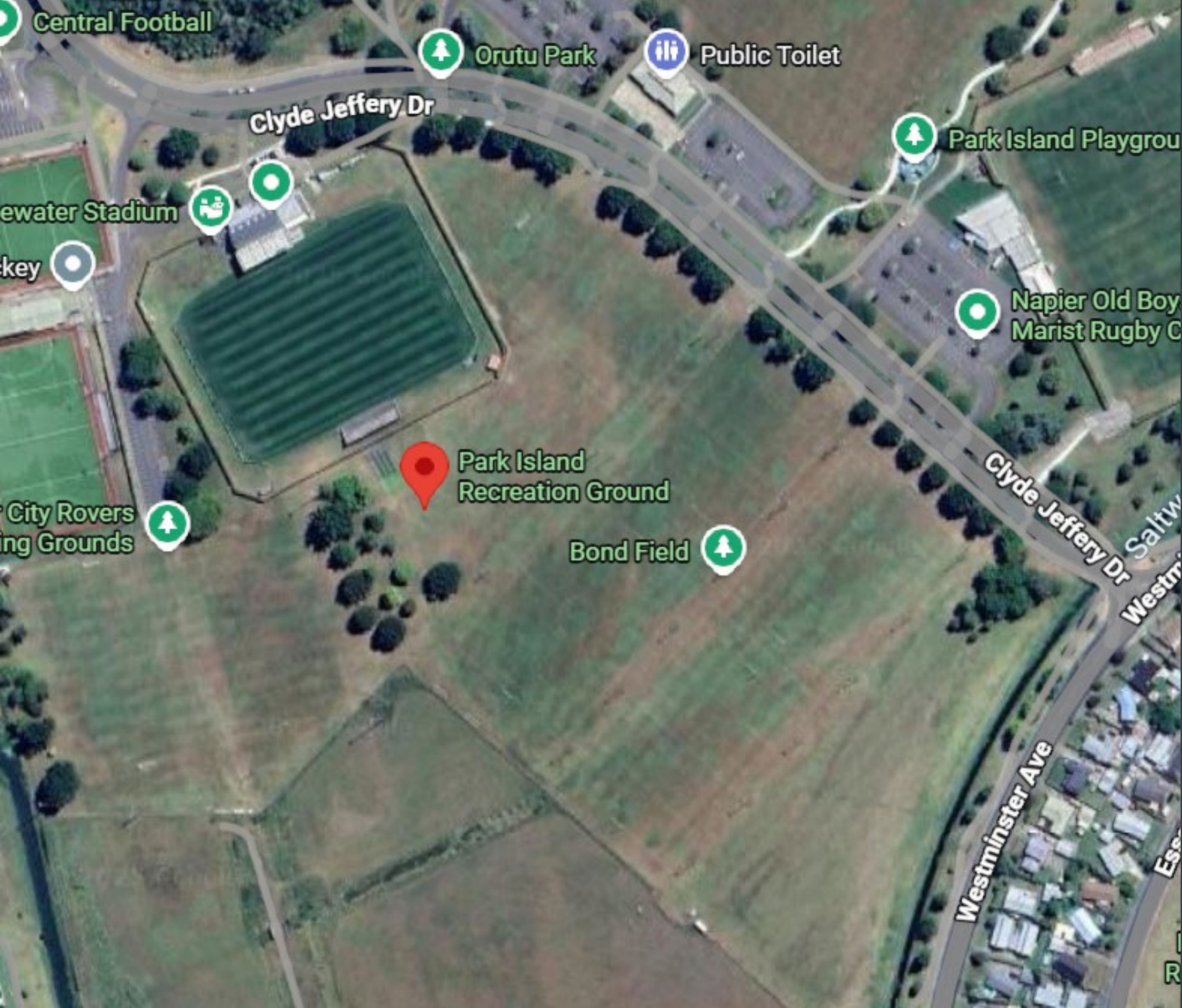
Feasibility study complete



NAPIER
CITY COUNCIL
Te Kaunihera o Ahuriri



AHURIRI PARK



PARK ISLAND SOUTHERN HUB



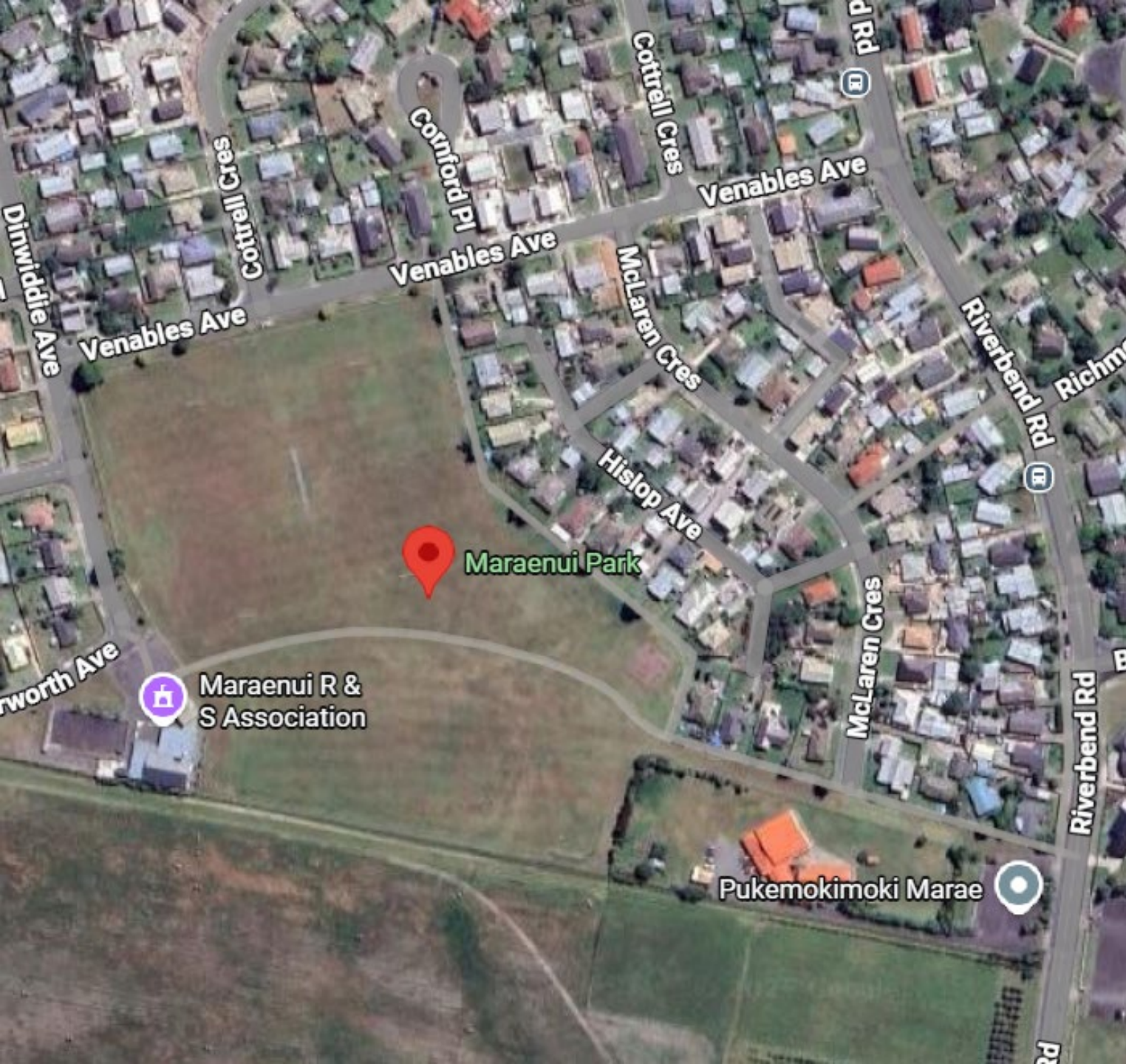
NAPIER
CITY COUNCIL
Te Kaunihera o Ahuriri



MAREWA PARK



NAPIER
CITY COUNCIL
Te Kaunihera o Ahuriri



MARAENUI PARK



NAPIER
CITY COUNCIL
Te Kaunihera o Ahuriri



BEHIND RODNEY GREEN ARENA, TARADALE



NAPIER
CITY COUNCIL
Te Kaunihera o Ahuriri



TAREHA RESERVE



NAPIER
CITY COUNCIL
Te Kaunihera o Ahuriri



WHITMORE RESERVE



NAPIER
CITY COUNCIL
Te Kaunihera o Ahuriri



PIRIMAI PARK



NAPIER
CITY COUNCIL
Te Kaunihera o Ahuriri



TAMATEA PARK



NAPIER
CITY COUNCIL
Te Kaunihera o Ahuriri



ANDERSON PARK



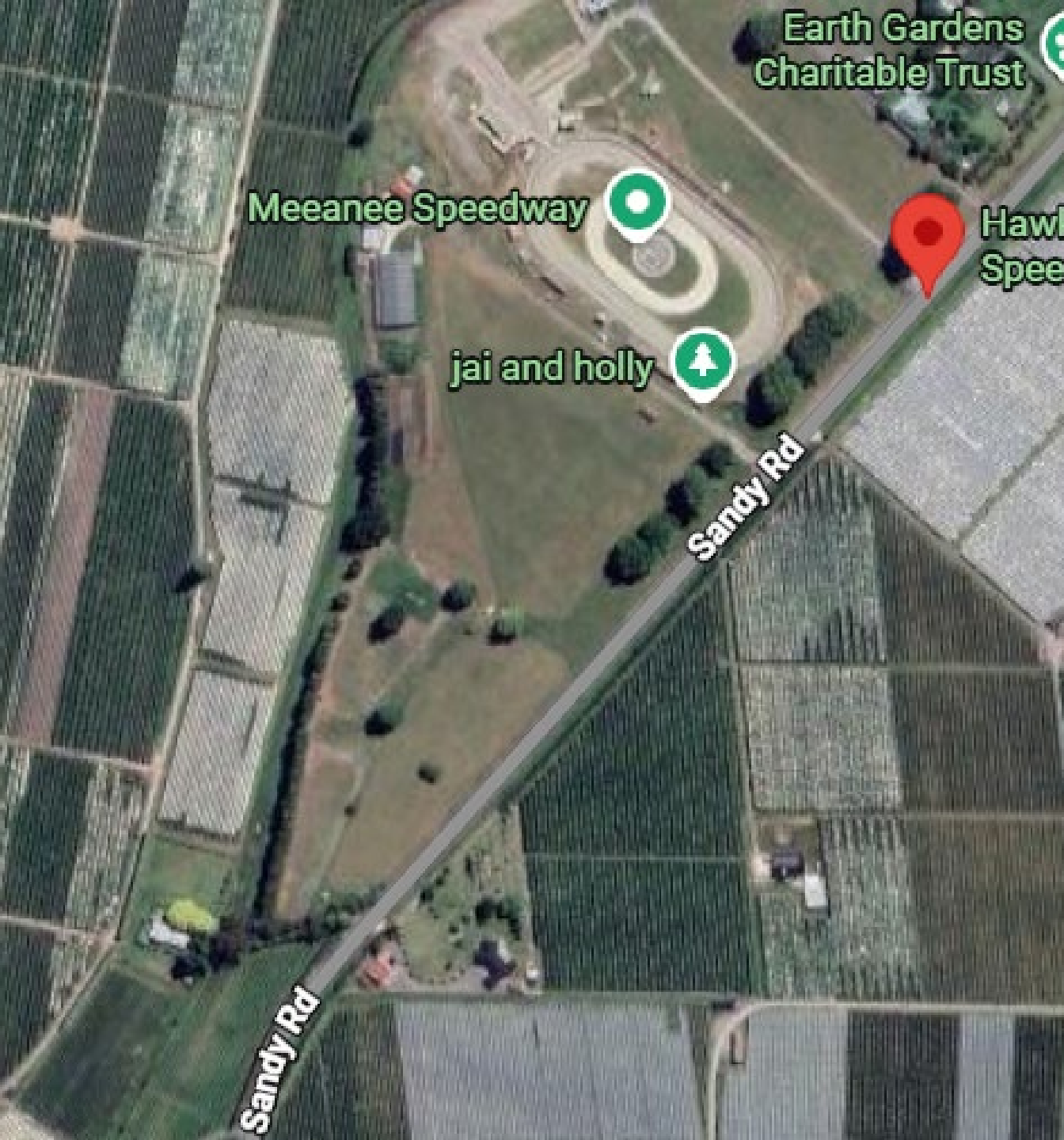
NAPIER
CITY COUNCIL
Te Kaunihera o Ahuriri



TARADALE PARK



NAPIER
CITY COUNCIL
Te Kaunihera o Ahuriri



Earth Gardens
Charitable Trust

Meeanee Speedway

Hawk
Speed

jai and holly

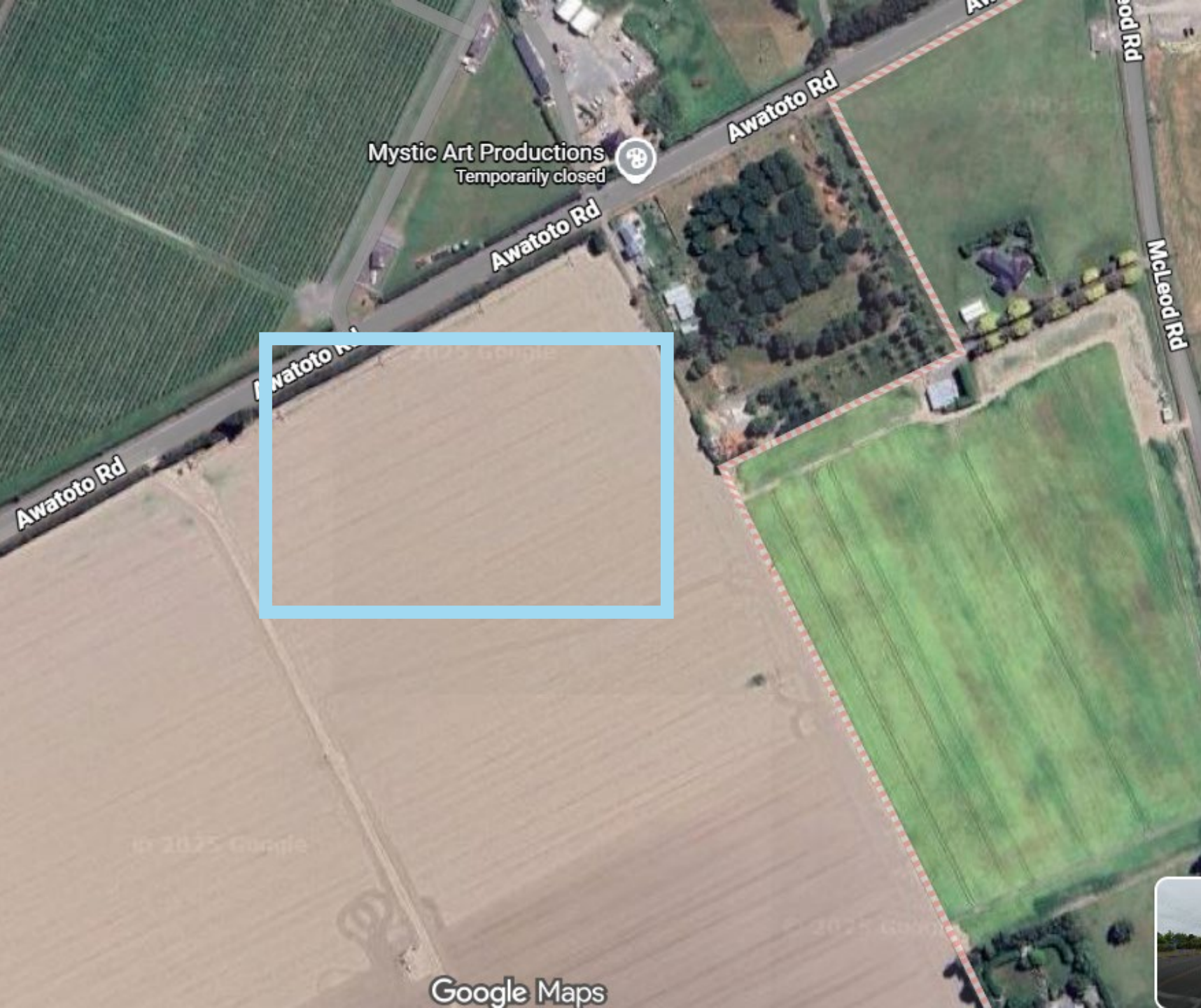
Sandy Rd

Sandy Rd

SPEEDWAY PARK



NAPIER
CITY COUNCIL
Te Kaunihera o Ahuriri



MEEANEE



NAPIER
CITY COUNCIL
Te Kaunihera o Ahuriri



AQUARIUM SITE



NAPIER
CITY COUNCIL
Te Kaunihera o Ahuriri



OCEAN SPA EXPANSION



NAPIER
CITY COUNCIL
Te Kaunihera o Ahuriri

ant Chairs



SPRIGGS PARK



NAPIER
CITY COUNCIL
Te Kaunihera o Ahuriri

We answered ...

Have you done a cost comparison between building new VS updating/expanding Onekawa pools?

Yes, updating/expanding the current facility is much more expensive.

If the aquatic facility location changes, what will the Onekawa site be used for?

There have been plans to create a different recreational offering. These would need to be updated.

If the current NAC facility is demolished, does the Onekawa site need to stay as green space or can it be sold for development?

No, it can't be sold for development unless reserve revoked but the Prebensen Drive site can.

Is refurbishment of the current Aquatic centre site in scope?

Yes, but it is a more expensive option than building new elsewhere on the Onekawa site.

*Is there a possibility to create a new build at the current location? **Yes.***

What locations are available and what are their strengths / weaknesses?

There are 18 NCC-owned sites available and each present different strengths and weaknesses.

During construction will the current facility still be available to be used?

If it is decided to build a new facility, the current facility will be available to use.

What are the future plans for the netball courts at Onekawa?

This would need to be fully explored.

